

Figures

Figure 1. Revised study area to the Heads of the Valleys Initiative and areas entered on the Historic Landscapes Registers

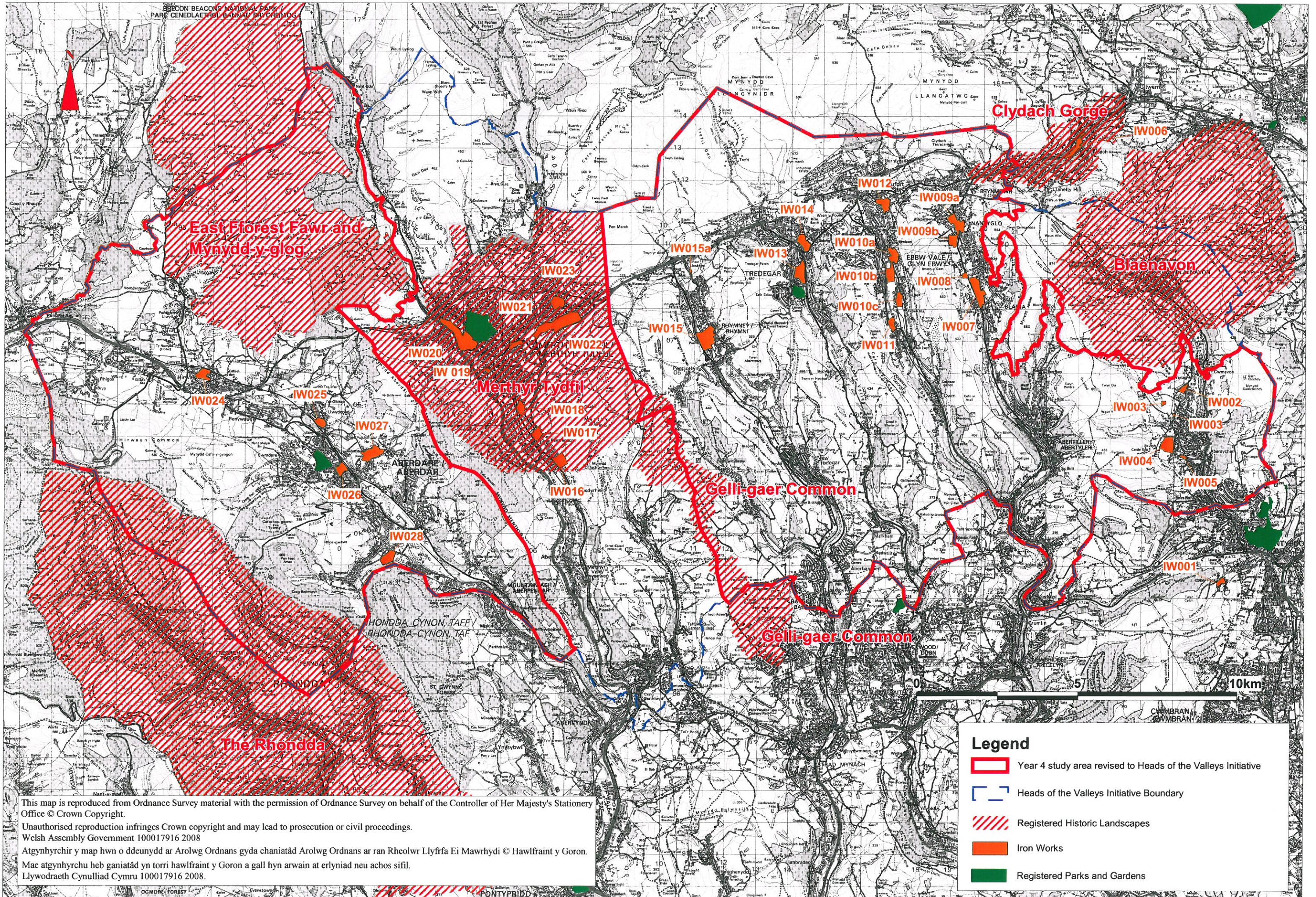
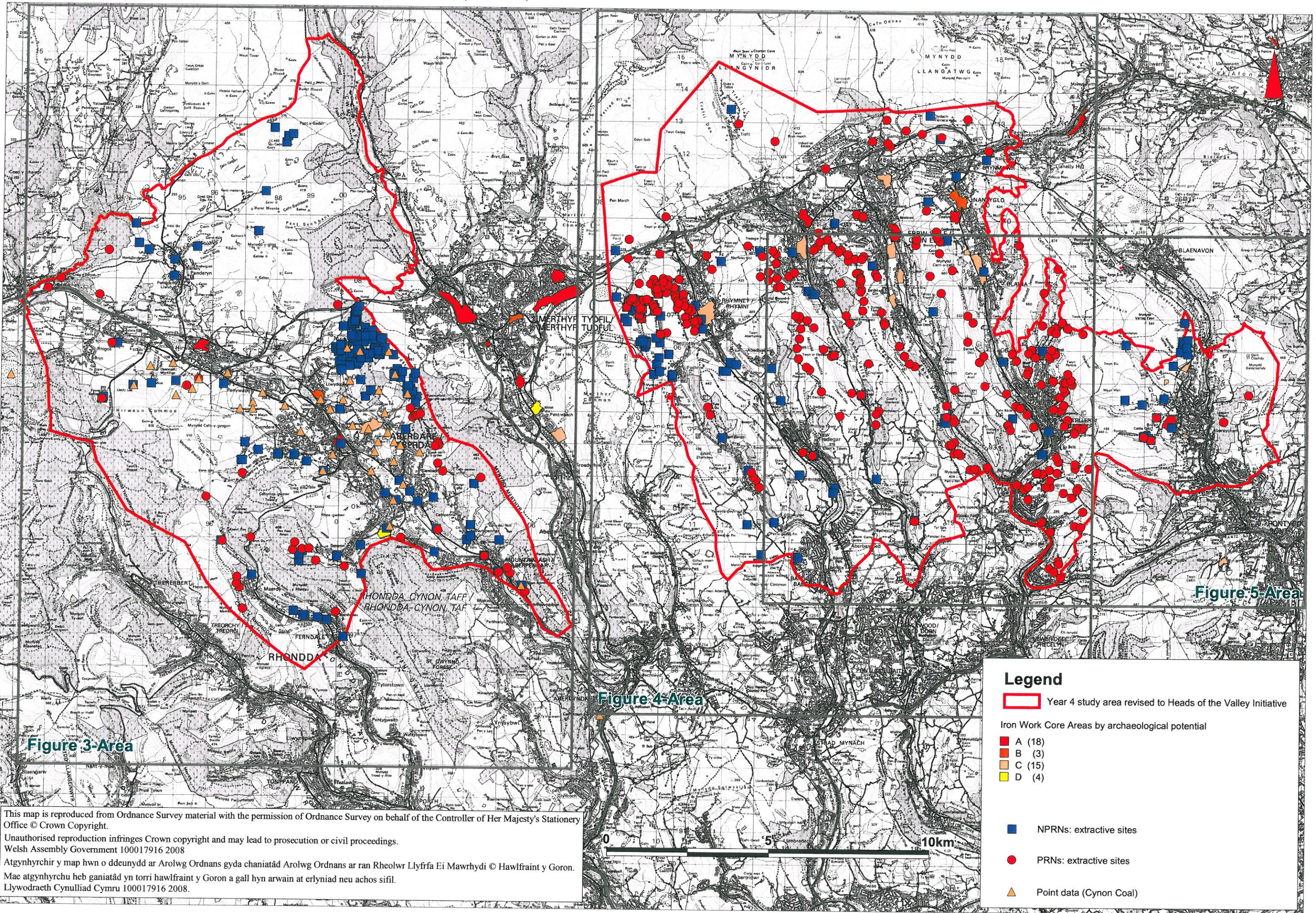


Figure 2. Extractive Features: HER/NMR data and additional point data (Cynon Coal)

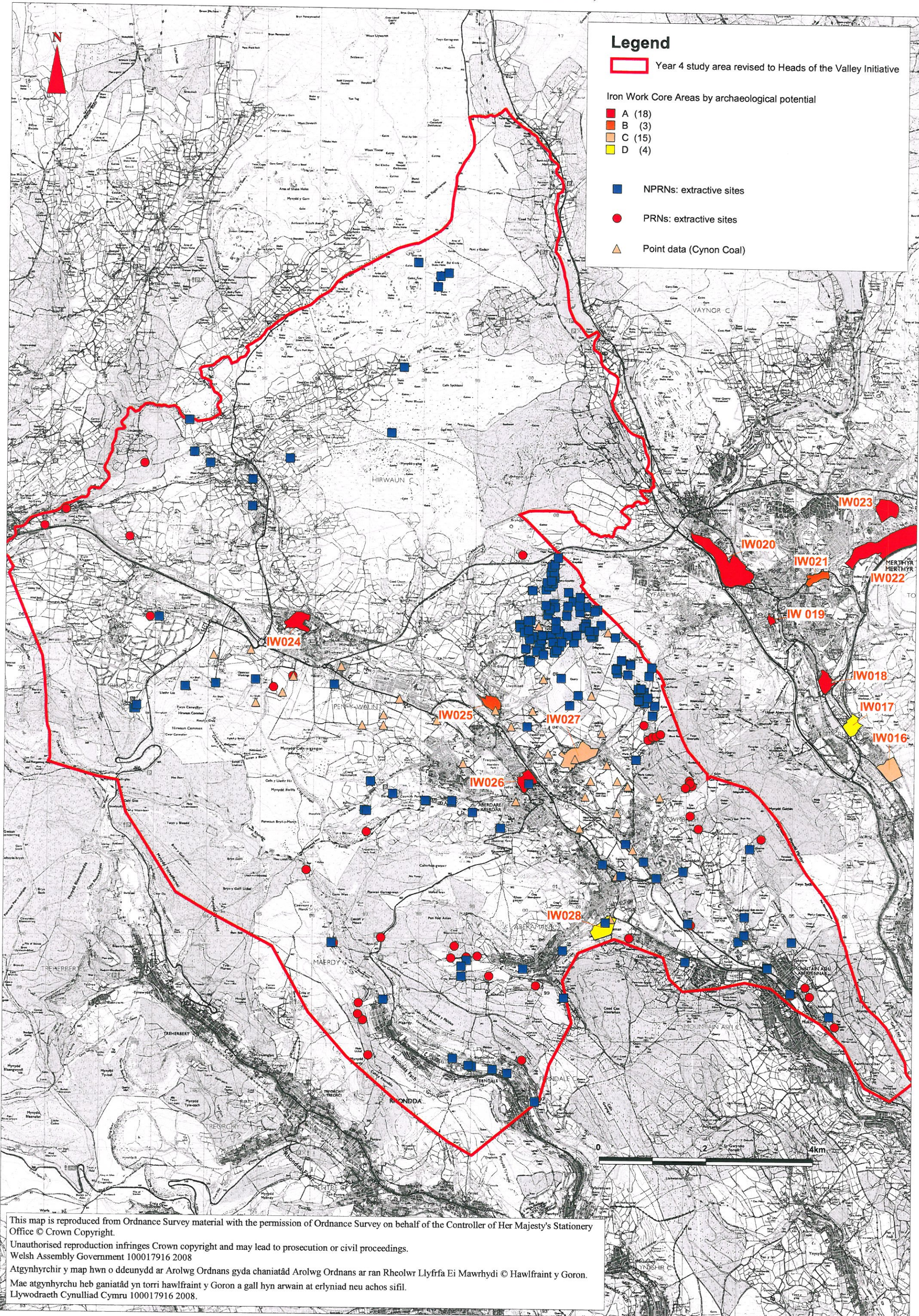


Legend

- Year 4 study area revised to Heads of the Valley Initiative
- Iron Work Core Areas by archaeological potential
 - A (18)
 - B (3)
 - C (15)
 - D (4)
- NPRNs: extractive sites
- PRNs: extractive sites
- Point data (Cynon Coal)

This map is reproduced from Ordnance Survey material with the permission of Ordnance Survey on behalf of the Controller of Her Majesty's Stationery Office © Crown Copyright.
 Unauthorised reproduction infringes Crown copyright and may lead to prosecution or civil proceedings.
 Welsh Assembly Government 100017916 2008
 Atgynhychir y map hwn o ddeunydd ar Arolwg Ordnans gyda chaniatâd Arolwg Ordnans ar ran Rheolwr Llyfrfa Ei Mawrhydi © Hawlfraint y Goron.
 Mae atgynhychu heb ganiatâd yn torri hawlfraint y Goron a gall hyn arwain at erlyniad neu achos sifil.
 Llywodraeth Cynulliad Cymru 100017916 2008.

Figure 3. Extractive features: HER/NMR data and additional point data (detail of western area)



This map is reproduced from Ordnance Survey material with the permission of Ordnance Survey on behalf of the Controller of Her Majesty's Stationery Office © Crown Copyright.
 Unauthorised reproduction infringes Crown copyright and may lead to prosecution or civil proceedings.
 Welsh Assembly Government 100017916 2008
 Atgynhychir y map hwn o ddeunydd ar Arolwg Ordans gyda chaniatâd Arolwg Ordans ar ran Rheolwr Llyfrfa Ei Mawrhydi © Hawlfraint y Goron.
 Mae atgynhychu heb ganiatâd yn torri hawlfraint y Goron a gall hyn arwain at erlyniad neu achos sifil.
 Llywodraeth Cynulliad Cymru 100017916 2008.

Figure 5. Extractive features: HER/NMR data and point data (detail of eastern area)

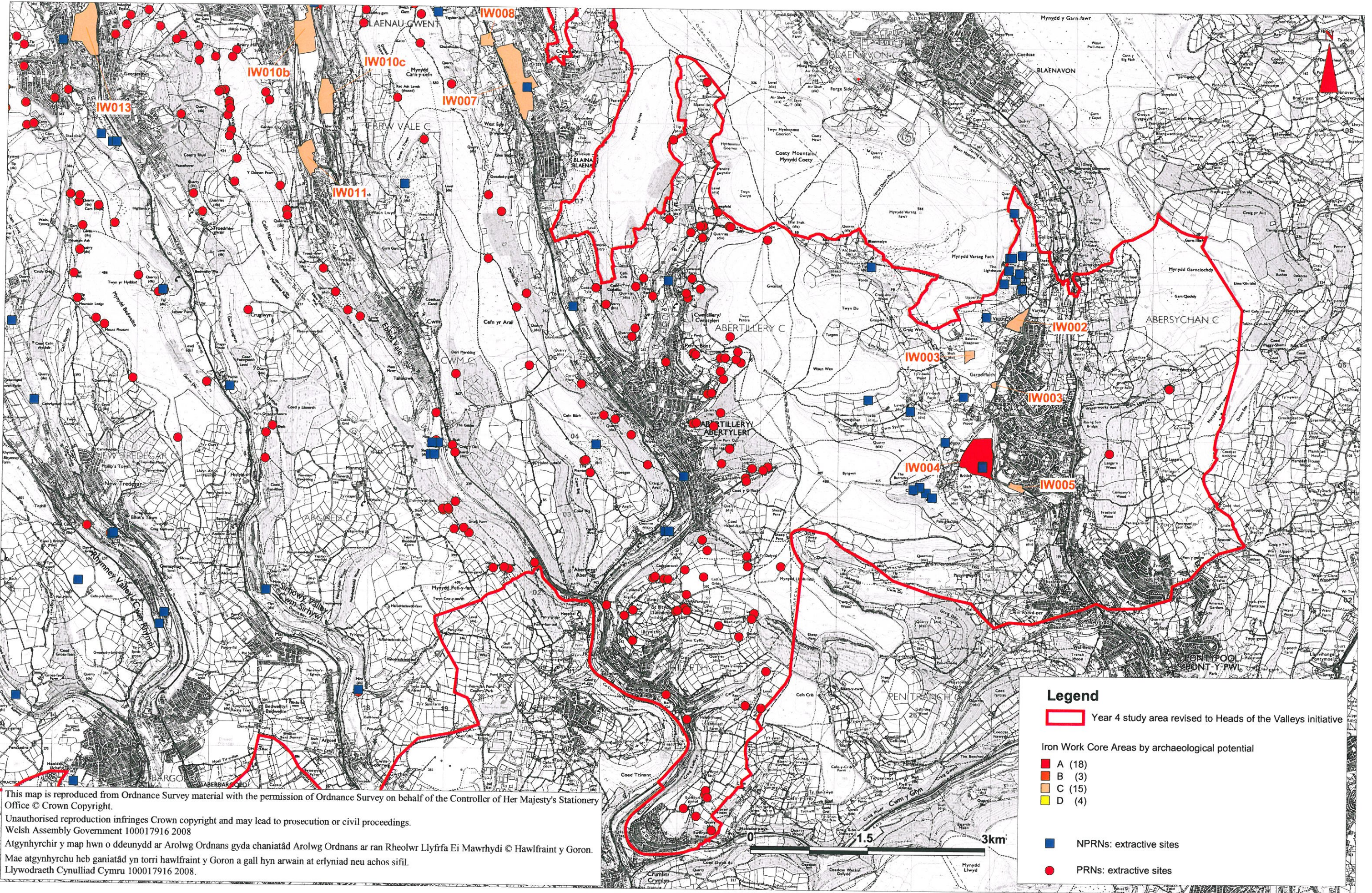


Figure 6. Extraction areas from 1st edition OS maps

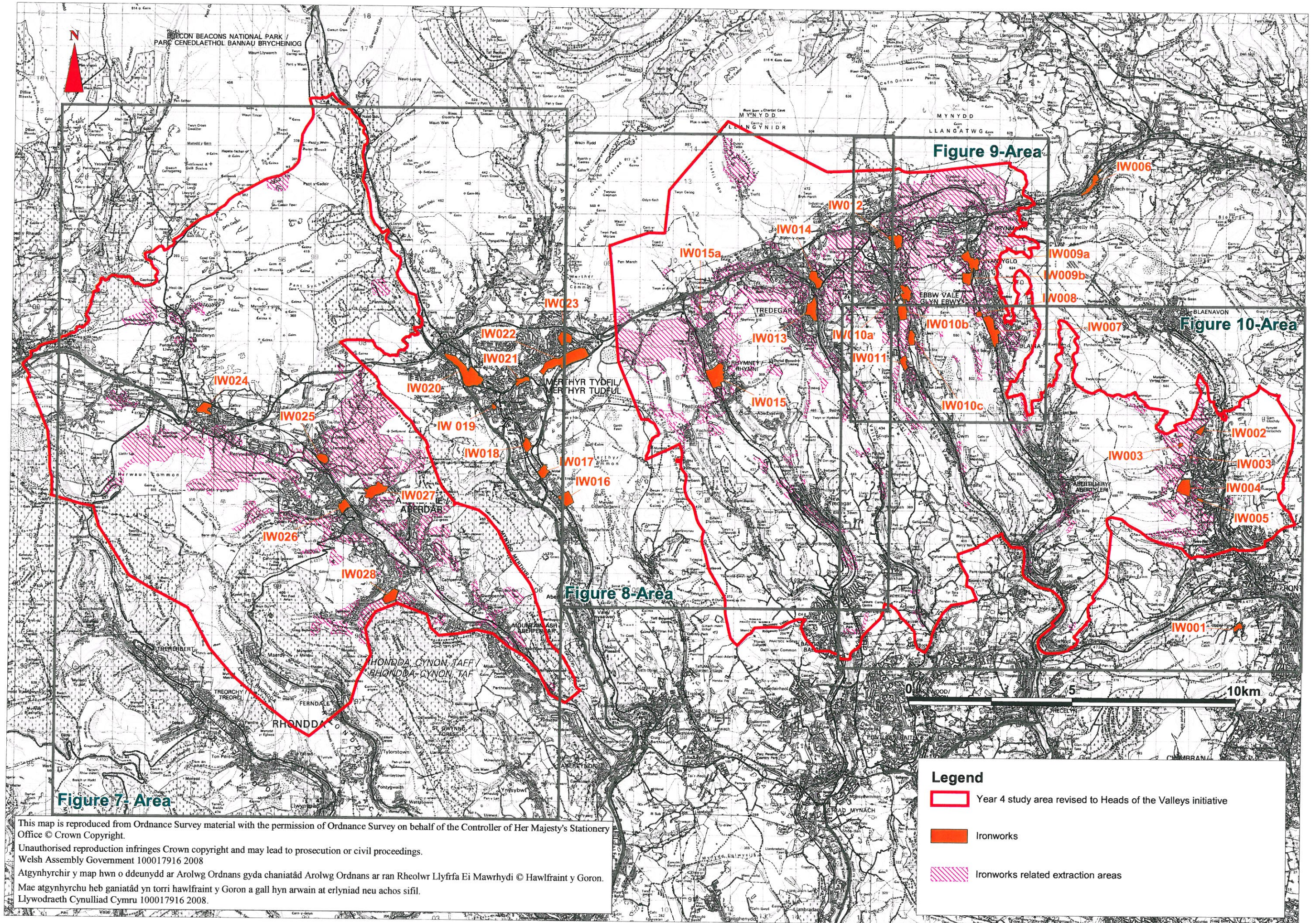
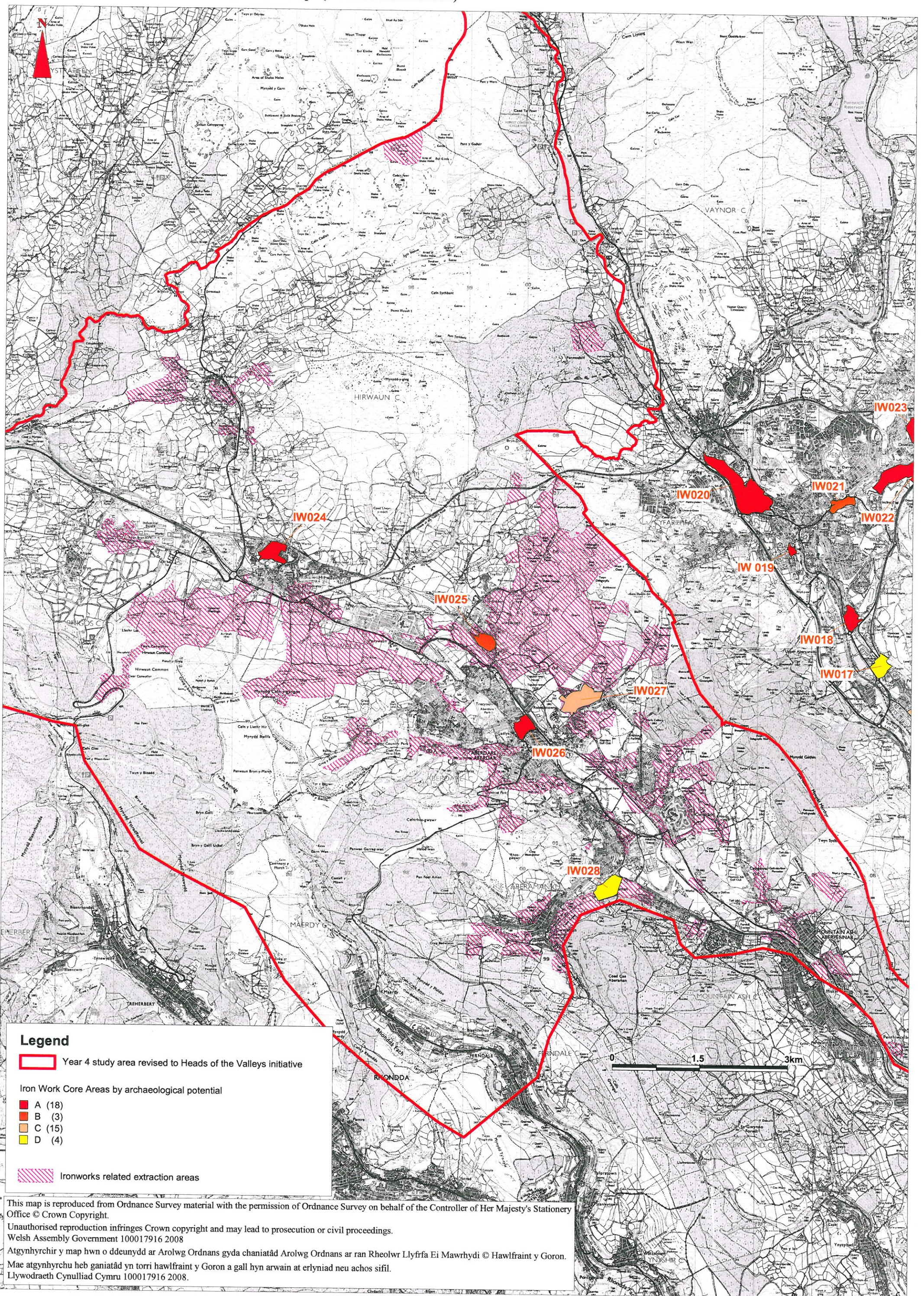
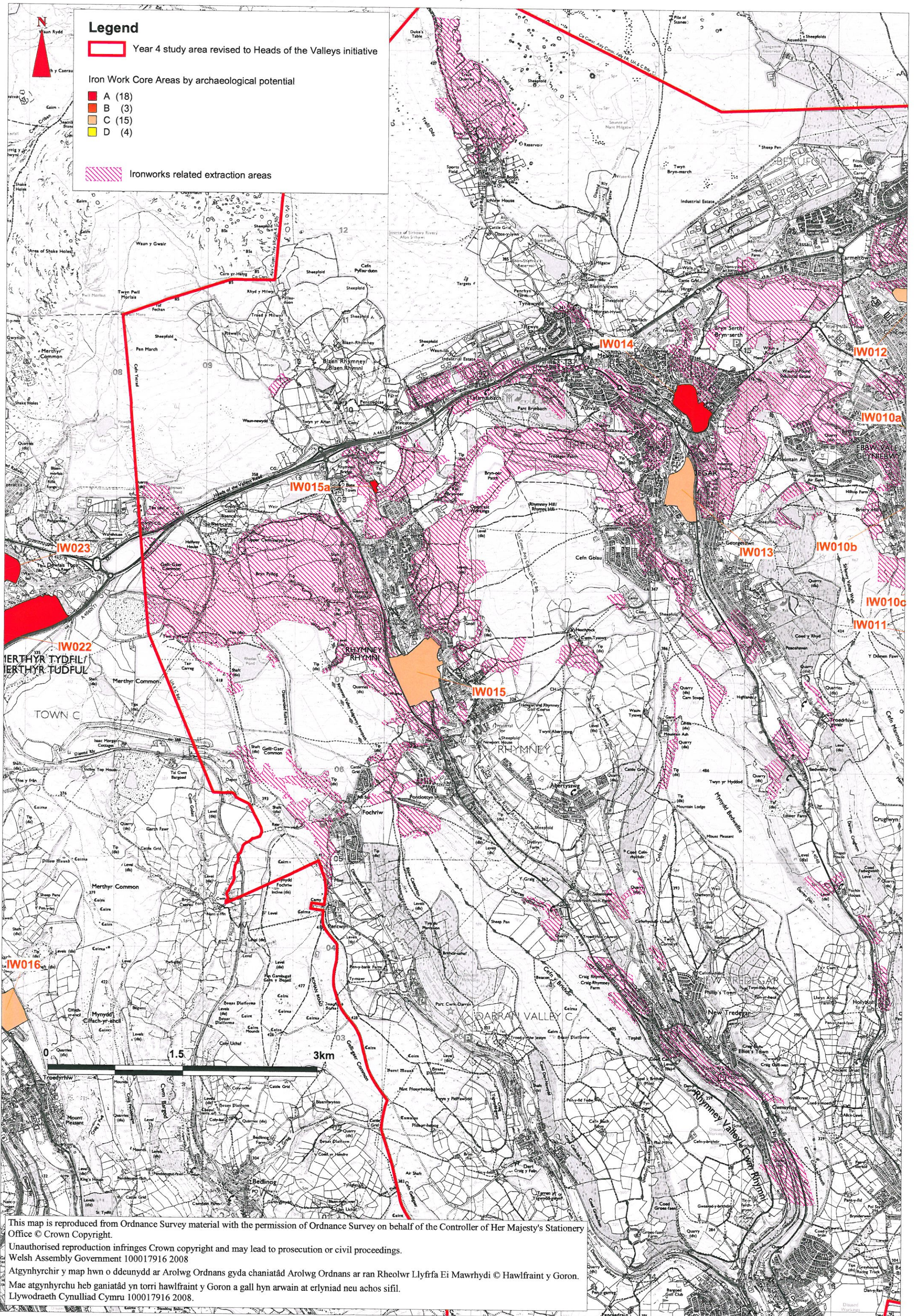


Figure 7. Extraction areas from 1st edition OS maps (detail of western area)



This map is reproduced from Ordnance Survey material with the permission of Ordnance Survey on behalf of the Controller of Her Majesty's Stationery Office © Crown Copyright.
 Unauthorised reproduction infringes Crown copyright and may lead to prosecution or civil proceedings.
 Welsh Assembly Government 100017916 2008
 Atgynhrychir y map hwn o ddeunydd ar Arolwg Ordnans gyda chaniatâd Arolwg Ordnans ar ran Rheolwr Llyfrfa Ei Mawrhydi © Hawlfraint y Goron.
 Mae atgynhrychu heb ganiatâd yn torri hawlfraint y Goron a gall hyn arwain at erlyniad neu achos sifil.
 Llywodraeth Cynulliad Cymru 100017916 2008.

Figure 8. Extraction areas from 1st edition OS maps (detail of eastern area)



This map is reproduced from Ordnance Survey material with the permission of Ordnance Survey on behalf of the Controller of Her Majesty's Stationery Office © Crown Copyright.
 Unauthorised reproduction infringes Crown copyright and may lead to prosecution or civil proceedings.
 Welsh Assembly Government 100017916 2008
 Atgynhychir y map hwn o ddeunydd ar Arolwg Ordnans gyda chaniatâd Arolwg Ordnans ar ran Rheolwr Llyfrfa Ei Mawrhydi © Hawlfraint y Goron.
 Mae atgynhychu heb ganiatâd yn torri hawlfraint y Goron a gall hyn arwain at erlyniad neu achos sifil.
 Llywodraeth Cynulliad Cymru 100017916 2008.

Figure 9. Extraction areas from 1st edition OS maps (detail of eastern area)

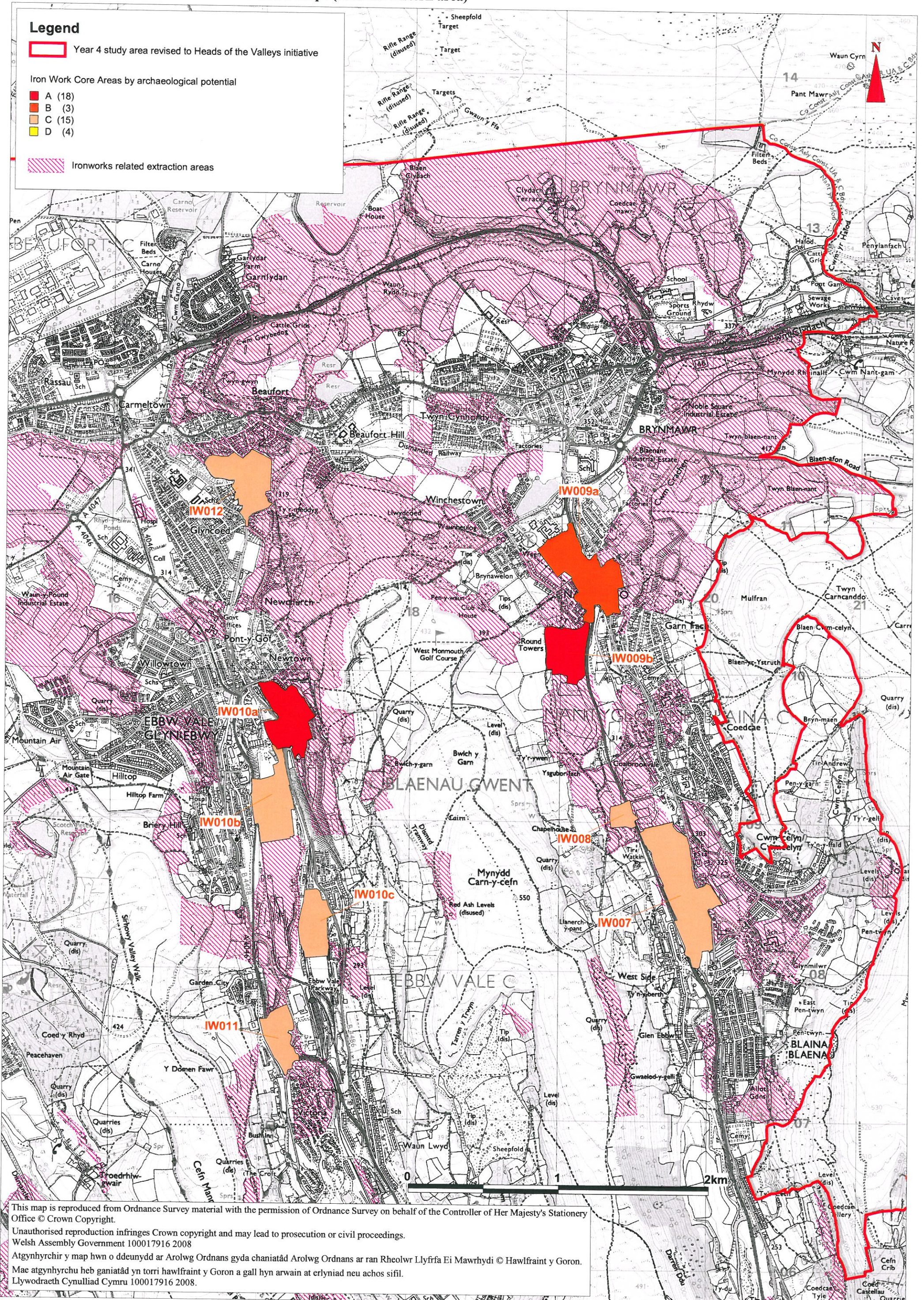


Figure 10. Extraction areas from 1st edition OS maps (detail of eastern area)

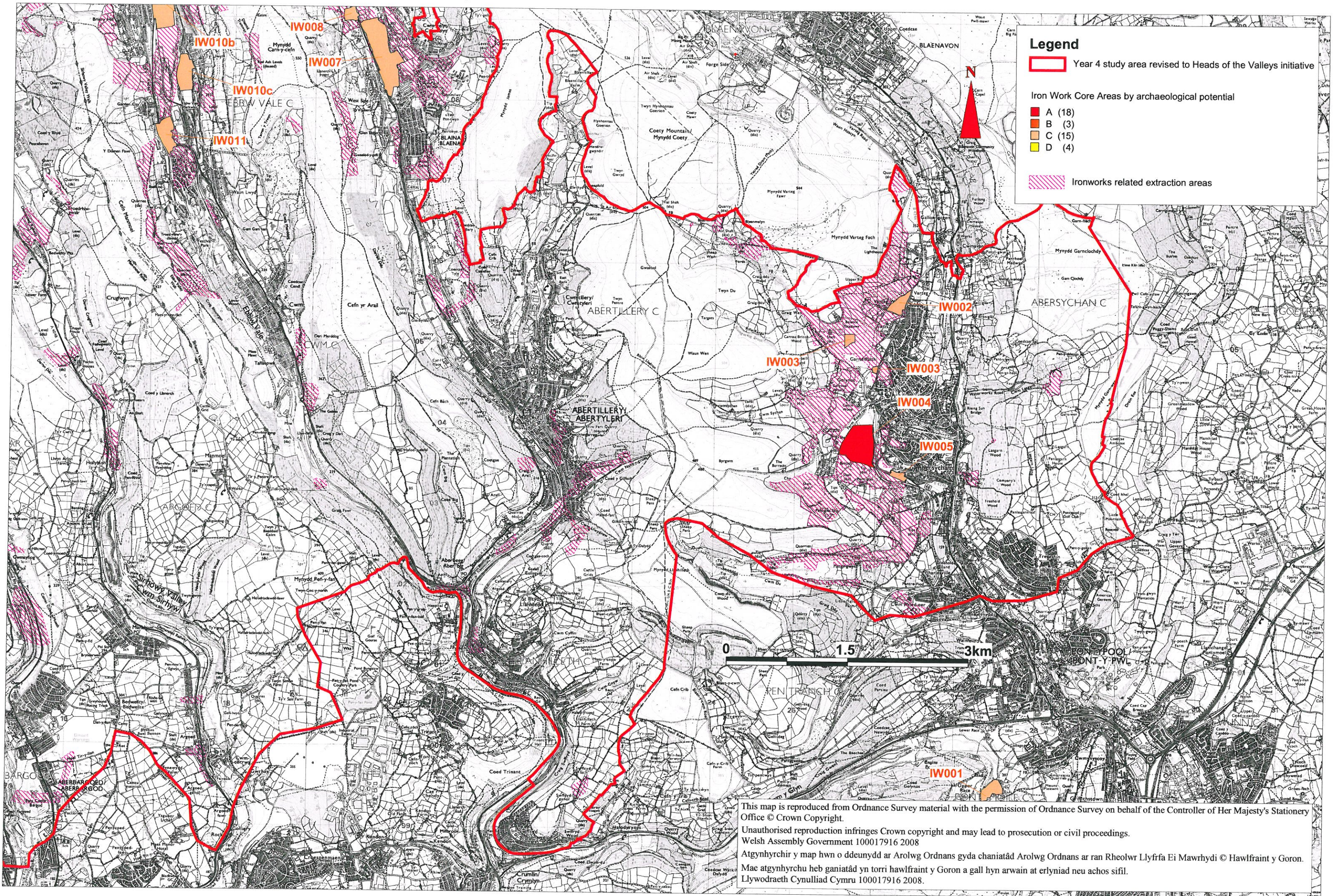
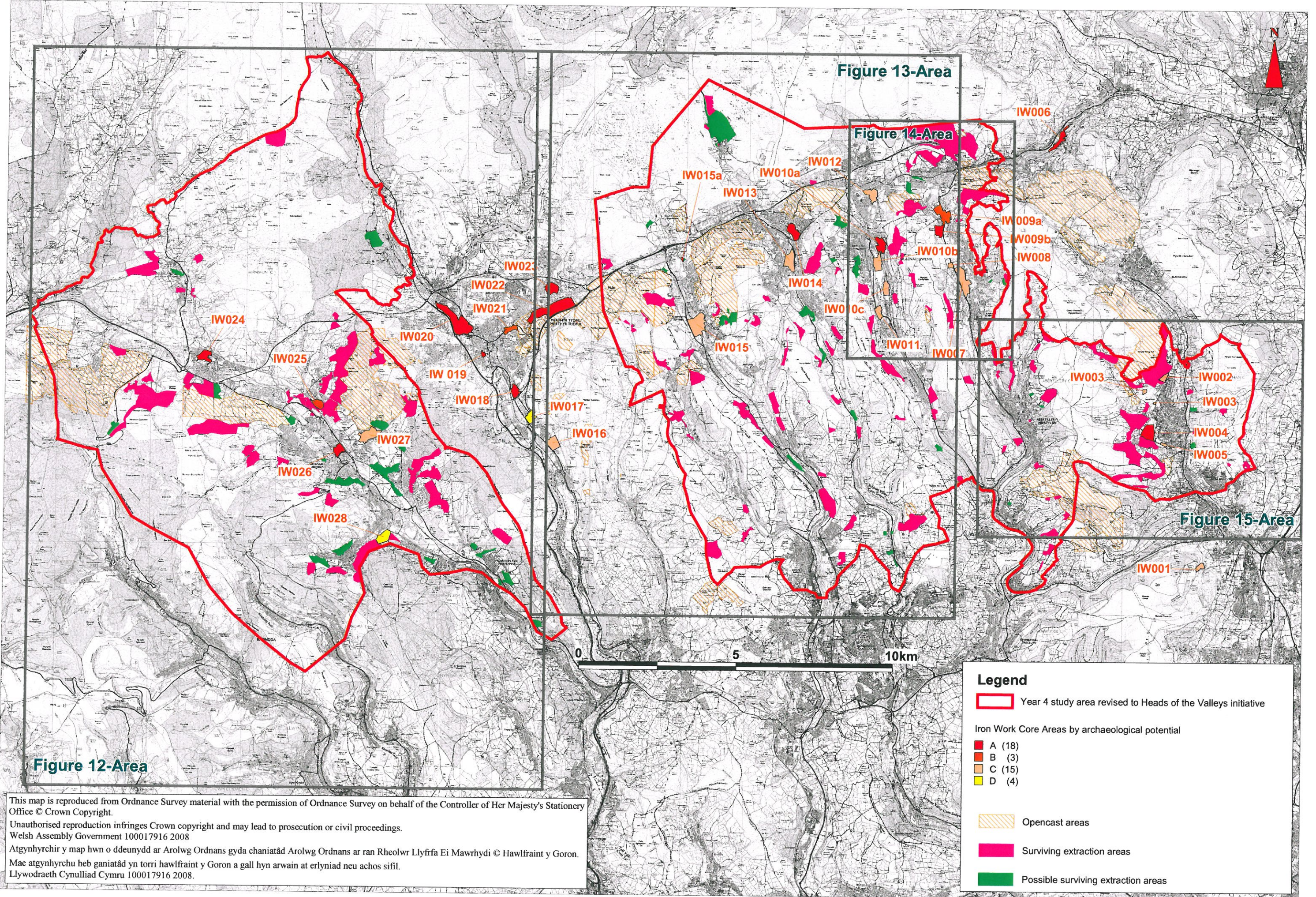


Figure 11. Surviving extraction areas

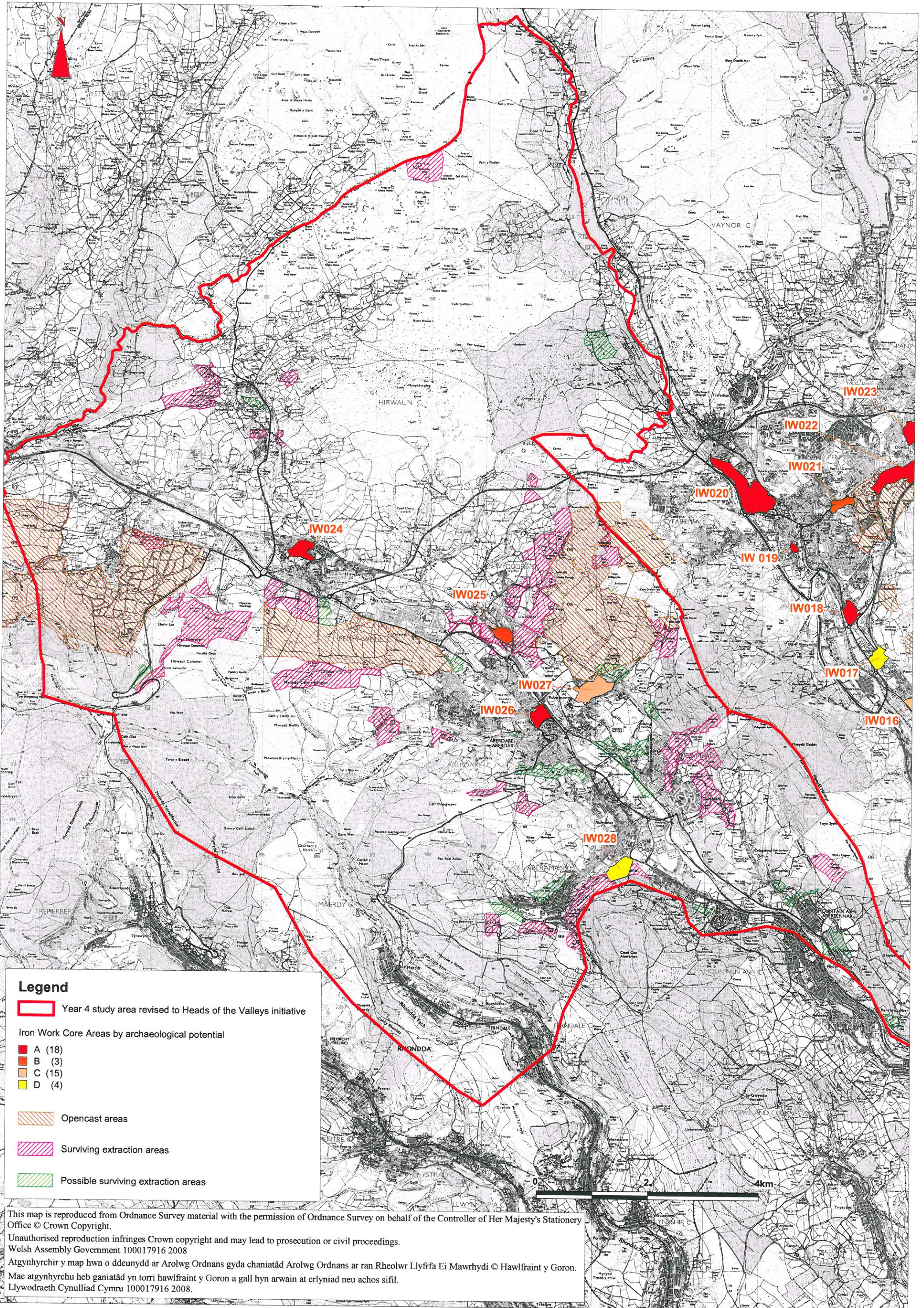


This map is reproduced from Ordnance Survey material with the permission of Ordnance Survey on behalf of the Controller of Her Majesty's Stationery Office © Crown Copyright.
 Unauthorised reproduction infringes Crown copyright and may lead to prosecution or civil proceedings.
 Welsh Assembly Government 100017916 2008
 Atgynhychir y map hwn o ddeunydd ar Arolwg Ordnans gyda chaniatâd Arolwg Ordnans ar ran Rheolwr Llyfrfa Ei Mawrhydi © Hawlfraint y Goron.
 Mae atgynhychu heb ganiatâd yn torri hawlfraint y Goron a gall hyn arwain at erlyniad neu achos sifil.
 Llywodraeth Cynulliad Cymru 100017916 2008.

Legend

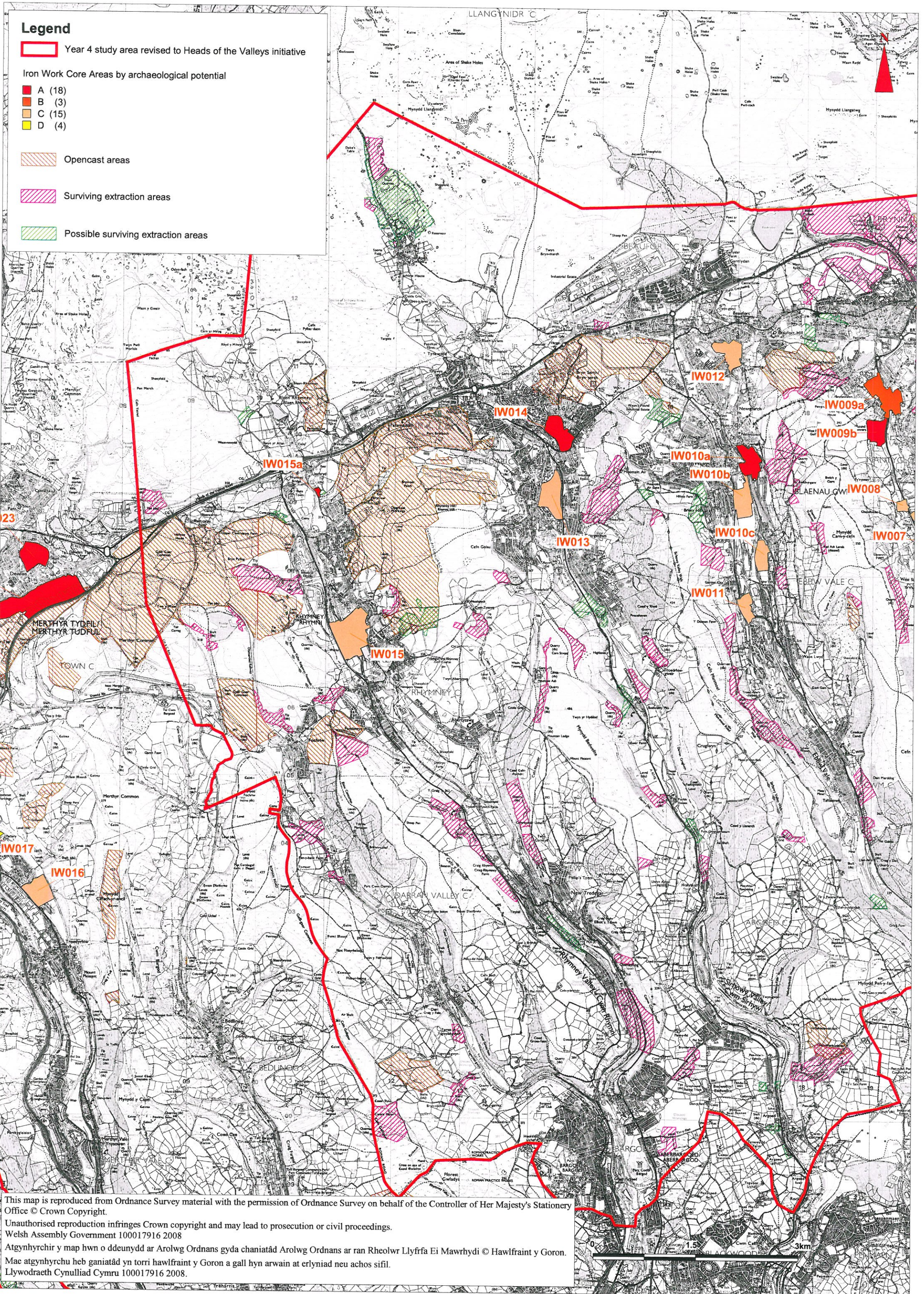
- Year 4 study area revised to Heads of the Valleys initiative
- Iron Work Core Areas by archaeological potential
 - A (18)
 - B (3)
 - C (15)
 - D (4)
- Opencast areas
- Surviving extraction areas
- Possible surviving extraction areas

Figure 12. Surviving extraction areas (detail of western area)



This map is reproduced from Ordnance Survey material with the permission of Ordnance Survey on behalf of the Controller of Her Majesty's Stationery Office © Crown Copyright.
 Unauthorised reproduction infringes Crown copyright and may lead to prosecution or civil proceedings.
 Welsh Assembly Government 100017916 2008
 Atgynhychir y map hwn o ddeunydd ar Arolwg Ordnans gyda chaniatâd Arolwg Ordnans ar ran Rheolwr Llyfrfa Ei Mawrhydi © Hawlfraint y Goron.
 Mae atgynhychu heb ganiatâd yn torri hawlfraint y Goron a gall hyn arwain at erlyniad neu achos sifil.
 Llywodraeth Cynulliad Cymru 100017916 2008.

Figure 13. Surviving extraction areas (detail of eastern area)



This map is reproduced from Ordnance Survey material with the permission of Ordnance Survey on behalf of the Controller of Her Majesty's Stationery Office © Crown Copyright.
 Unauthorised reproduction infringes Crown copyright and may lead to prosecution or civil proceedings.
 Welsh Assembly Government 100017916 2008
 Atgynhychir y map hwn o ddeunydd ar Arolwg Ordnans gyda chaniatâd Arolwg Ordnans ar ran Rheolwr Llyfrfa Ei Mawrhydi © Hawlfraint y Goron.
 Mae atgynhychu heb ganiatâd yn torri hawlfraint y Goron a gall hyn arwain at erlyniad neu achos sifil.
 Llywodraeth Cynulliad Cymru 100017916 2008.

Figure 14. Surviving extraction areas (detail of eastern area)

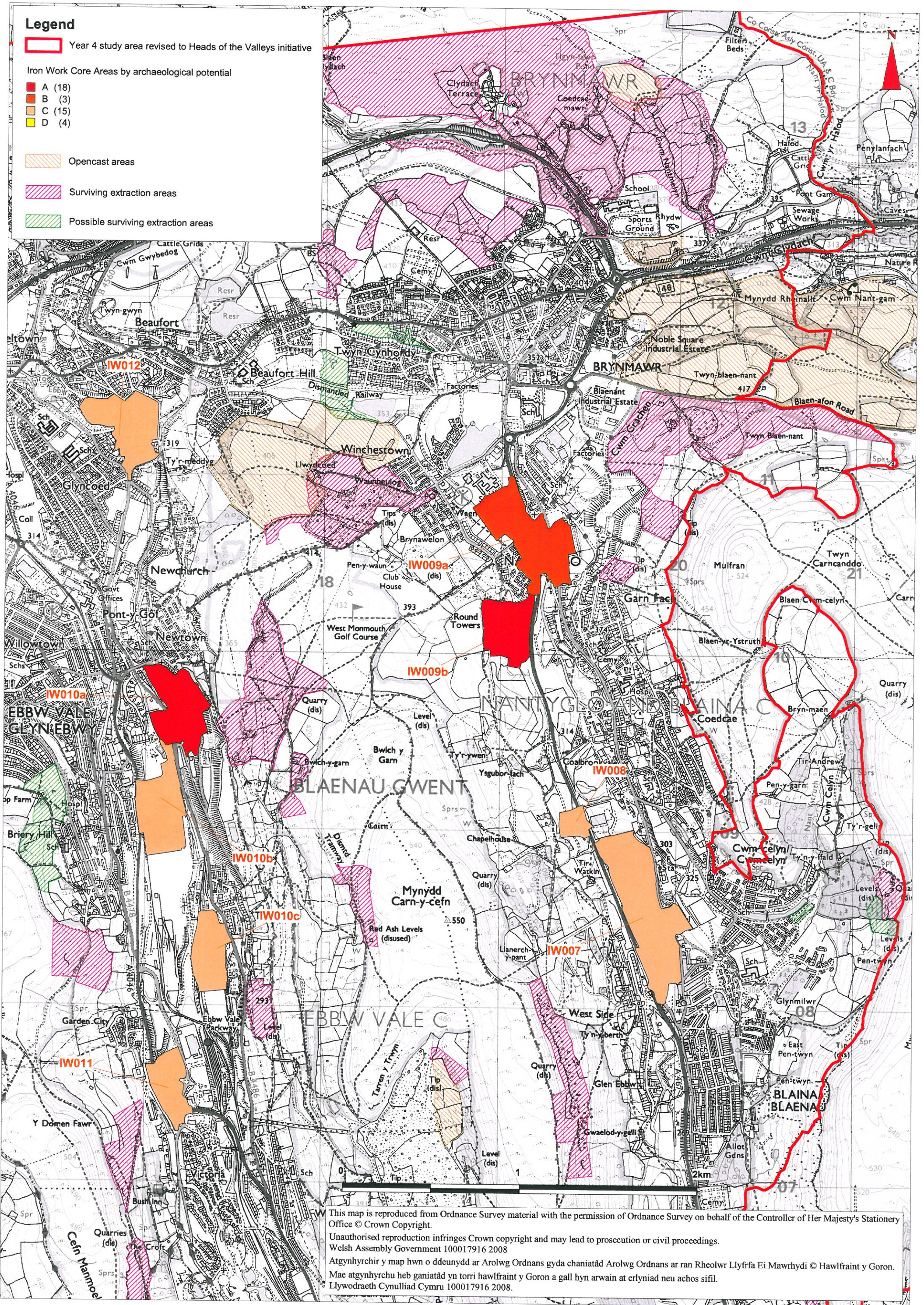
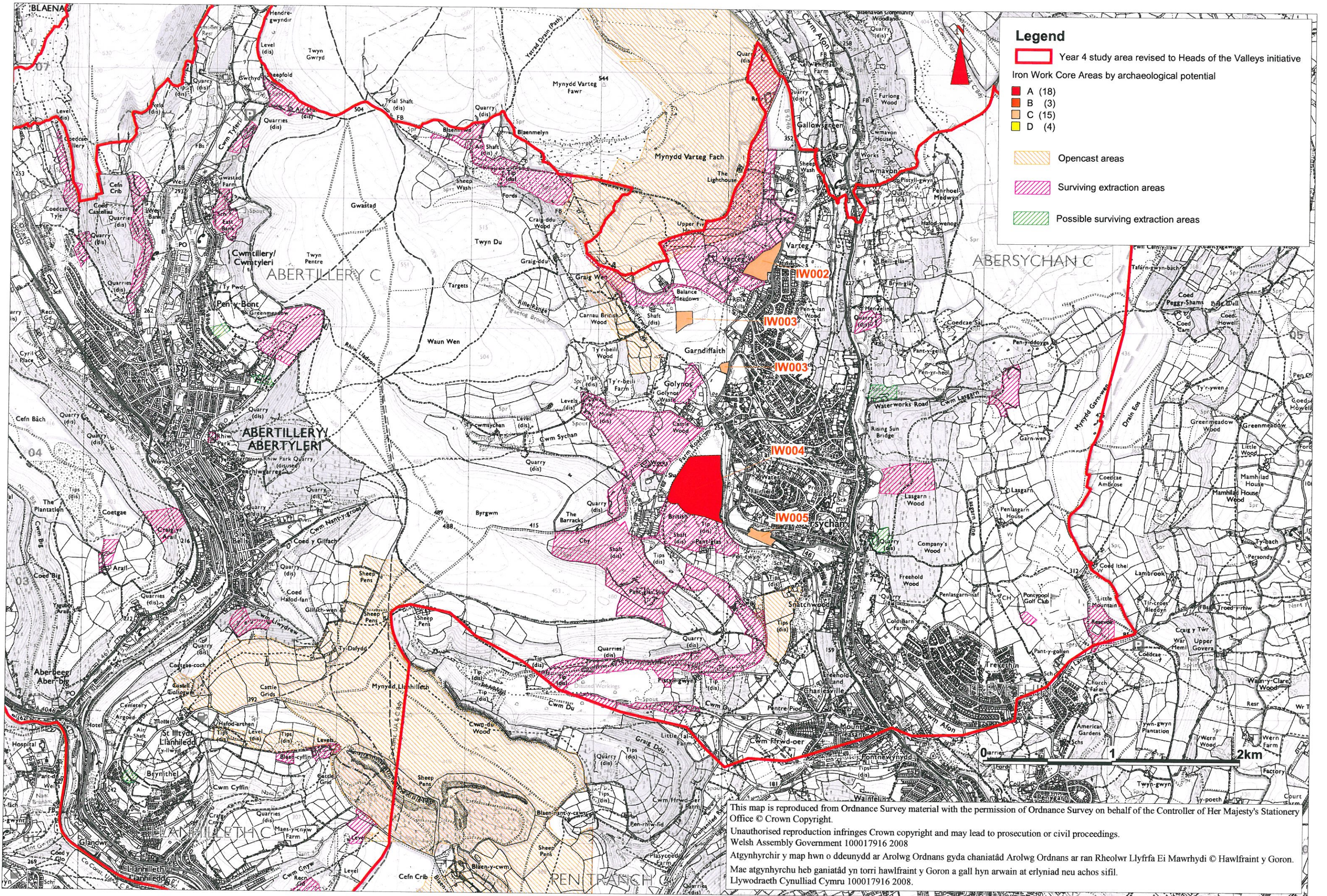


Figure 15. Surviving extraction areas (detail of eastern area)



Legend

- Year 4 study area revised to Heads of the Valleys initiative
- Iron Work Core Areas by archaeological potential
 - A (18)
 - B (3)
 - C (15)
 - D (4)
- Opencast areas
- Surviving extraction areas
- Possible surviving extraction areas

This map is reproduced from Ordnance Survey material with the permission of Ordnance Survey on behalf of the Controller of Her Majesty's Stationery Office © Crown Copyright.
 Unauthorised reproduction infringes Crown copyright and may lead to prosecution or civil proceedings.
 Welsh Assembly Government 100017916 2008
 Atgynhychir y map hwn o ddeunydd ar Arolwg Ordnans gyda chaniatâd Arolwg Ordnans ar ran Rheolwr Llyfrfa Ei Mawrhydi © Hawlfraint y Goron.
 Mae atgynhychu heb ganiatâd yn torri hawlfraint y Goron a gall hyn arwain at erlyniad neu achos sifil.
 Llywodraeth Cynulliad Cymru 100017916 2008.

Figure 16. Extraction features: statutory protection within year 4 study area

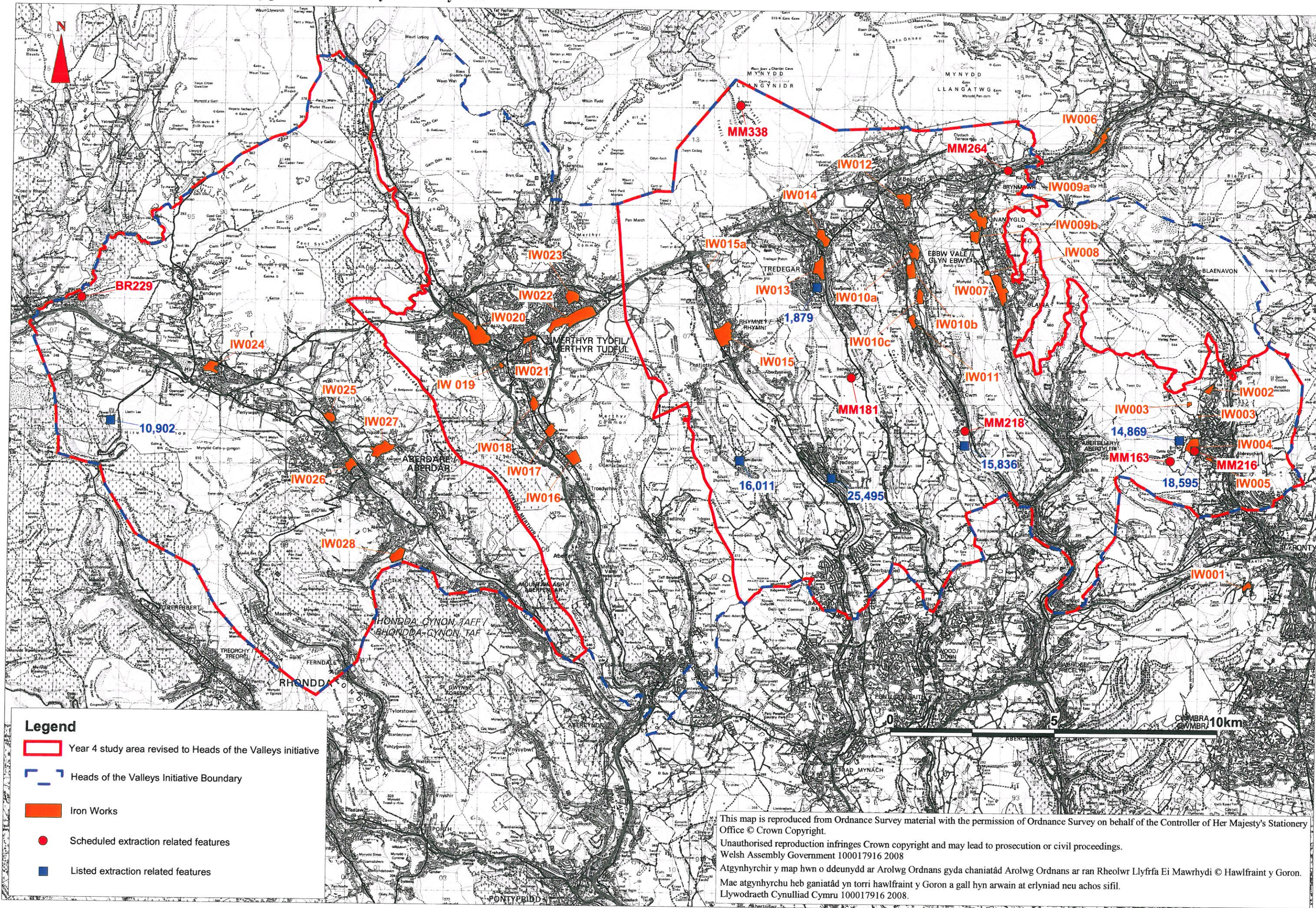


Figure 17. Archaeological constraints map (landscape level) showing provisional historic industrial ironworks landscapes of significance

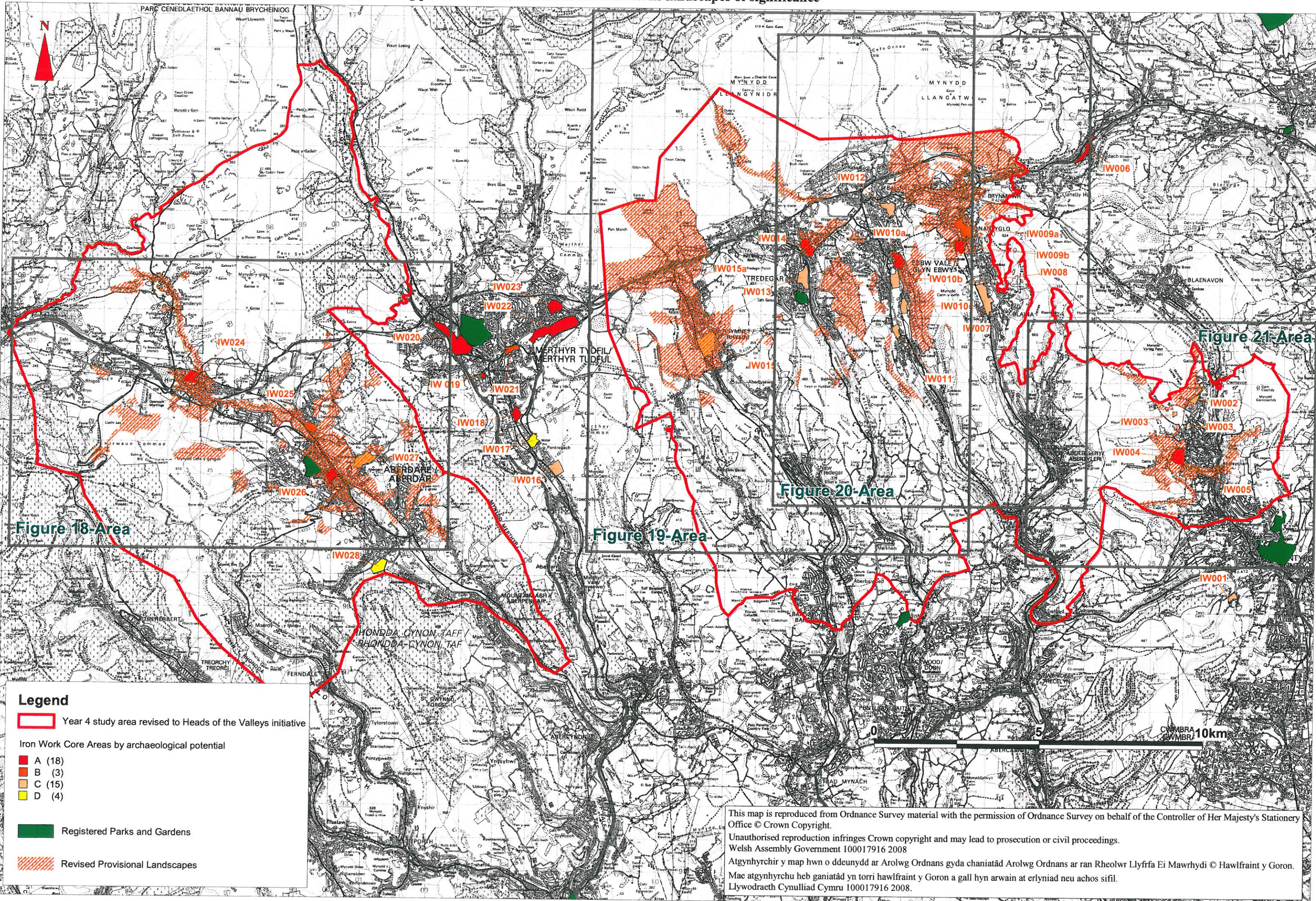


Figure 18. Archaeological constraints map (detail of western area)

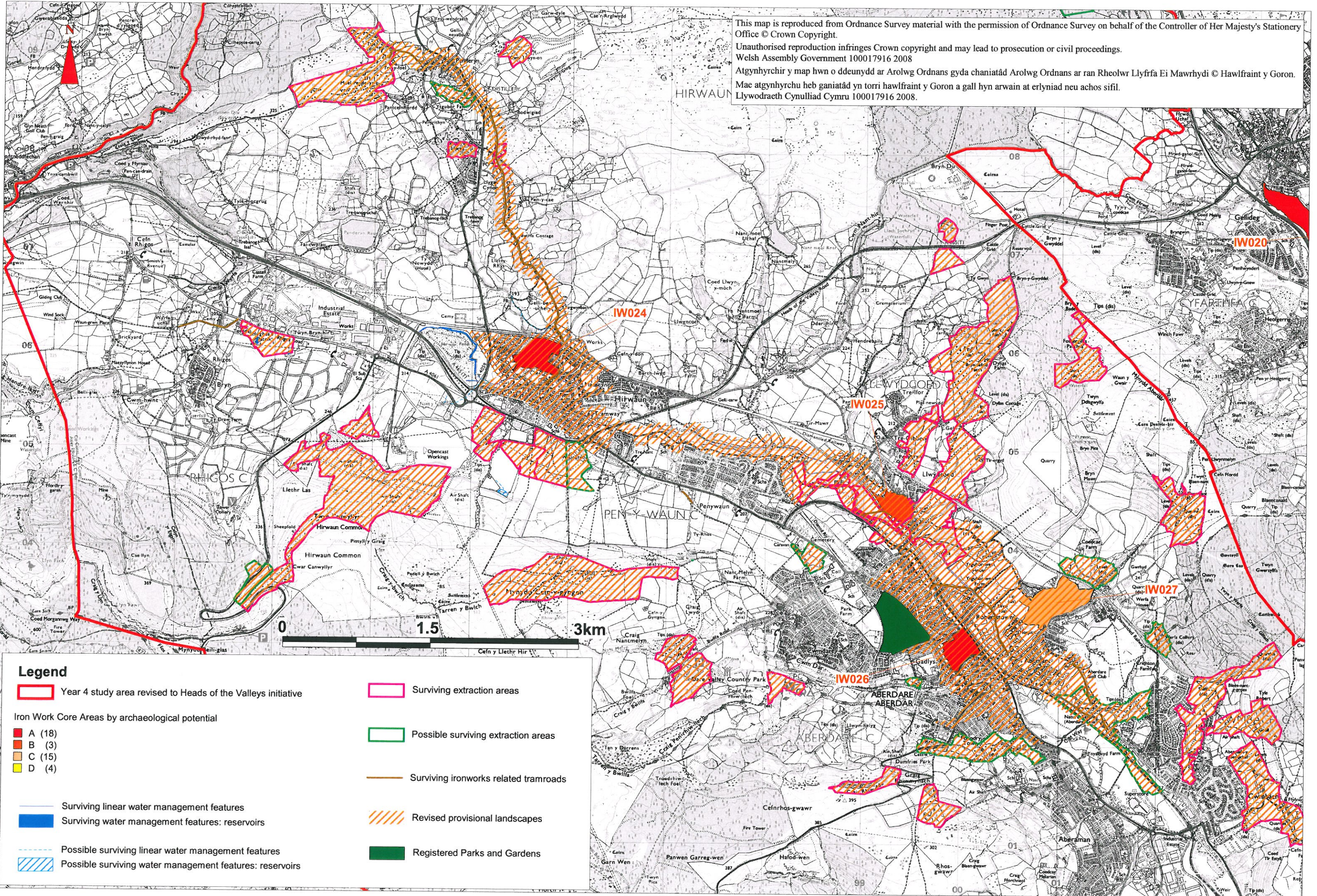
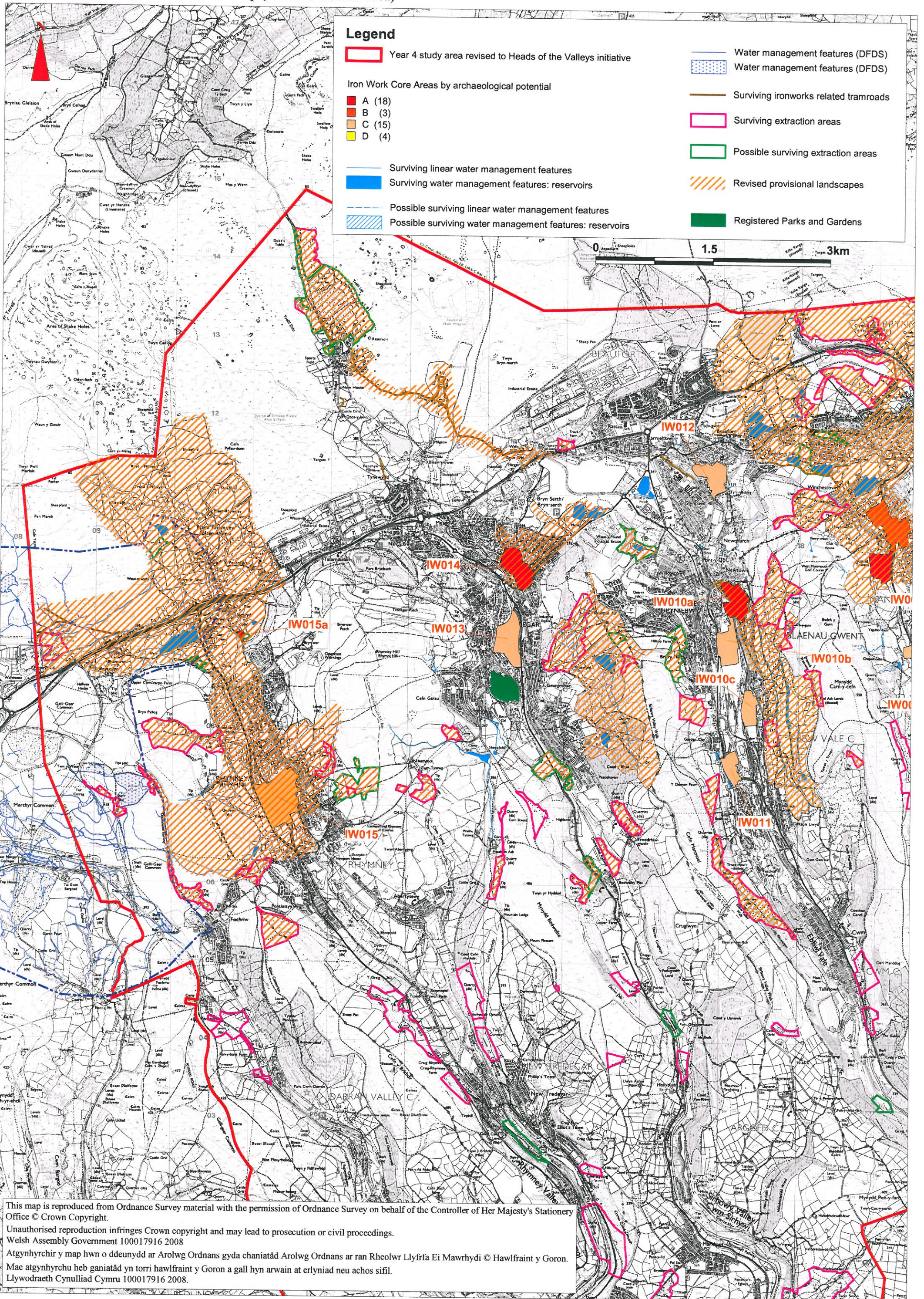
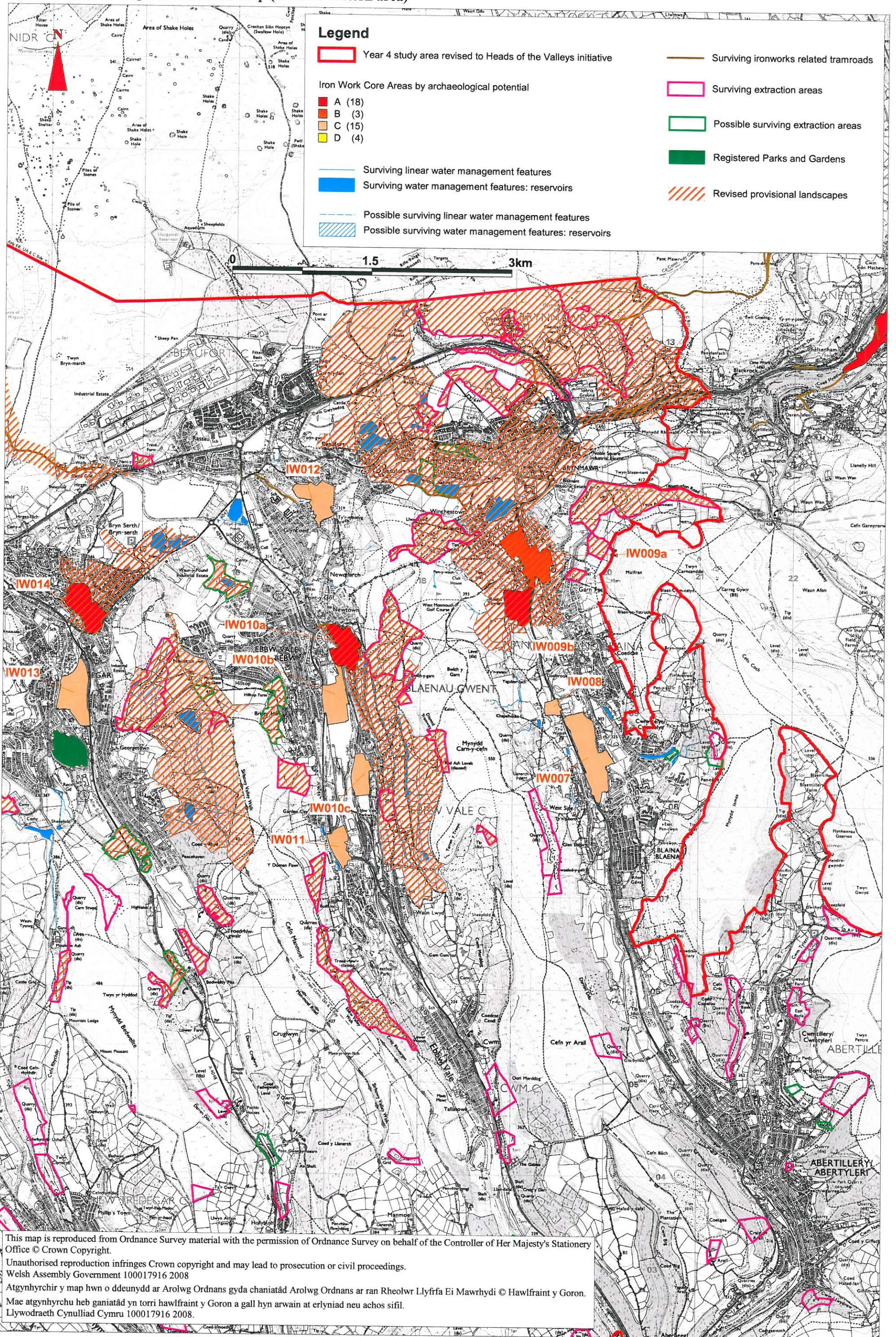


Figure 19. Archaeological constraints map (detail of eastern area)



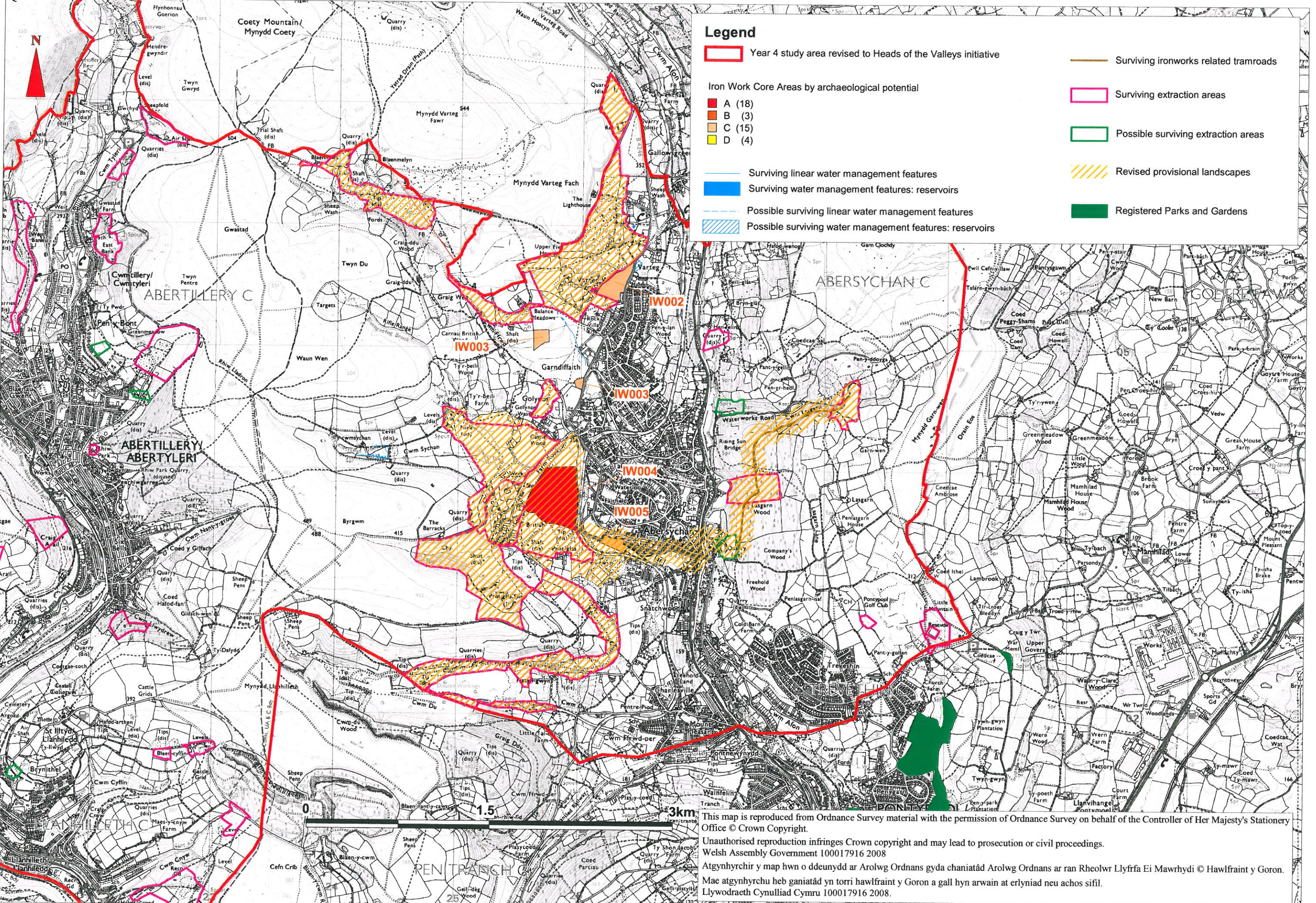
This map is reproduced from Ordnance Survey material with the permission of Ordnance Survey on behalf of the Controller of Her Majesty's Stationery Office © Crown Copyright.
 Unauthorised reproduction infringes Crown copyright and may lead to prosecution or civil proceedings.
 Welsh Assembly Government 100017916 2008
 Atgynhrychir y map hwn o ddeunydd ar Arolwg Ordnans gyda chaniatâd Arolwg Ordnans ar ran Rheolwr Llyfrfa Ei Mawrhydi © Hawlfraint y Goron.
 Mae atgynhychu heb ganiatâd yn torri hawlfraint y Goron a gall hyn arwain at erlyniad neu achos sifil.
 Llywodraeth Cynulliad Cymru 100017916 2008.

Figure 20. Archaeological constraints map (detail of eastern area)



This map is reproduced from Ordnance Survey material with the permission of Ordnance Survey on behalf of the Controller of Her Majesty's Stationery Office © Crown Copyright.
 Unauthorised reproduction infringes Crown copyright and may lead to prosecution or civil proceedings.
 Welsh Assembly Government 100017916 2008
 Atgynhychir y map hwn o ddeunydd ar Arolwg Ordans gyda chaniatâd Arolwg Ordans ar ran Rheolwr Llyfrfa Ei Mawrhydi © Hawlfraint y Goron.
 Mae atgynhychu heb ganiatâd yn torri hawlfraint y Goron a gall hyn arwain at erlyniad neu achos sifil.
 Llywodraeth Cynulliad Cymru 100017916 2008.

Figure 21. Archaeological constraints map (detail of eastern area)



This map is reproduced from Ordnance Survey material with the permission of Ordnance Survey on behalf of the Controller of Her Majesty's Stationery Office © Crown Copyright.
 Unauthorised reproduction infringes Crown copyright and may lead to prosecution or civil proceedings.
 Welsh Assembly Government 100017916 2008
 Atgynhychir y map hwn o ddeunydd ar Arolwg Ordnans gyda chaniatâd Arolwg Ordnans ar ran Rheolwr Llyfrfa Ei Mawrhydi © Hawffraint y Goron.
 Mae atgynhychu heb ganiatâd yn torri hawffraint y Goron a gall hyn arwain at erlyniad neu achos sifil.
 Llywodraeth Cynulliad Cymru 100017916 2008.